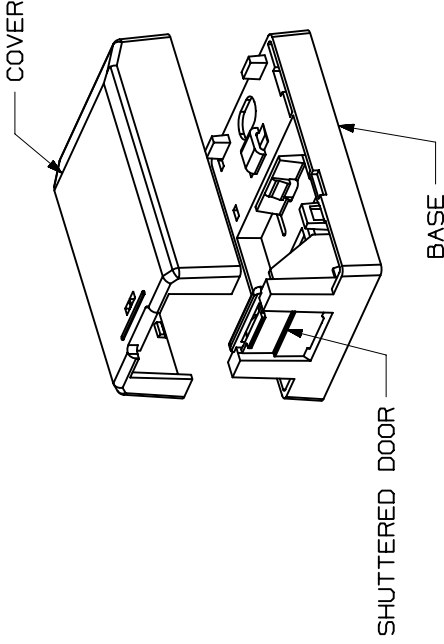
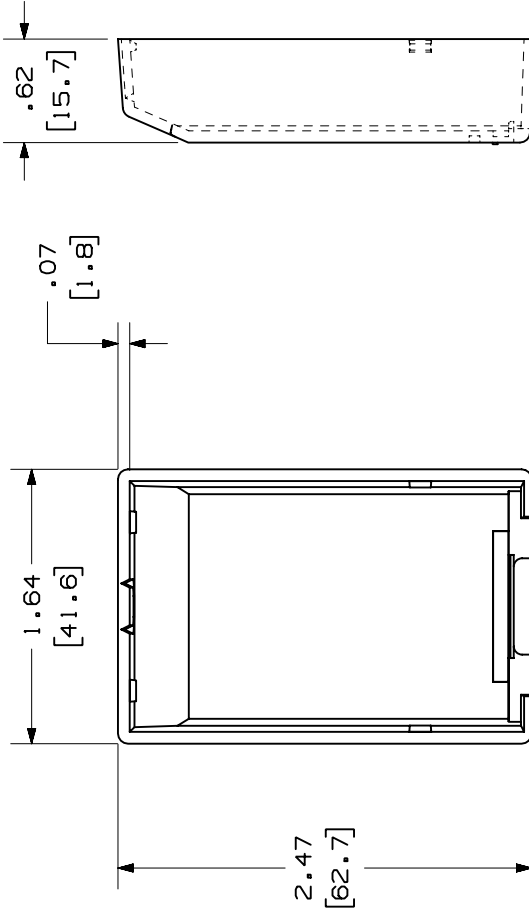
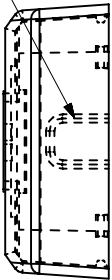


THIS COPY IS PROVIDED ON A RESTRICTED BASIS AND IS NOT TO BE USED IN ANY WAY DETRIMENTAL TO THE INTERESTS OF PANDUIT CORP.

BREAKOUT AREA



CAD FILENAME/LAYERS

M00800AD_DC_01A.PRT

PANDUIT

CORP. TINLEY PARK, ILLINOIS

MINI-COM 1 POSITION
SHUTTERED BOX (CBXS1**)

CUSTOMER DRAWING

UNLESS OTHERWISE SPECIFIED,
DIMENSIONAL TOLERANCES ARE:
(.X) ±.010(.3)
(.XX) ±.03(.8) ANGLES ±

UNLESS OTHERWISE SPECIFIED,
ALL DIMENSIONS ARE GIVEN
IN INCHES, THIRD ANGLE PROJECTION.

| | | | |
|------------|---------|-------------|--------------|
| DRAWN BY | JSP | MAT'L | NONE |
| DATE | 3-15-01 | DRAWING NO. | 00800-21 |
| CHECKED BY | | SCALE | SHEET 2 OF 2 |

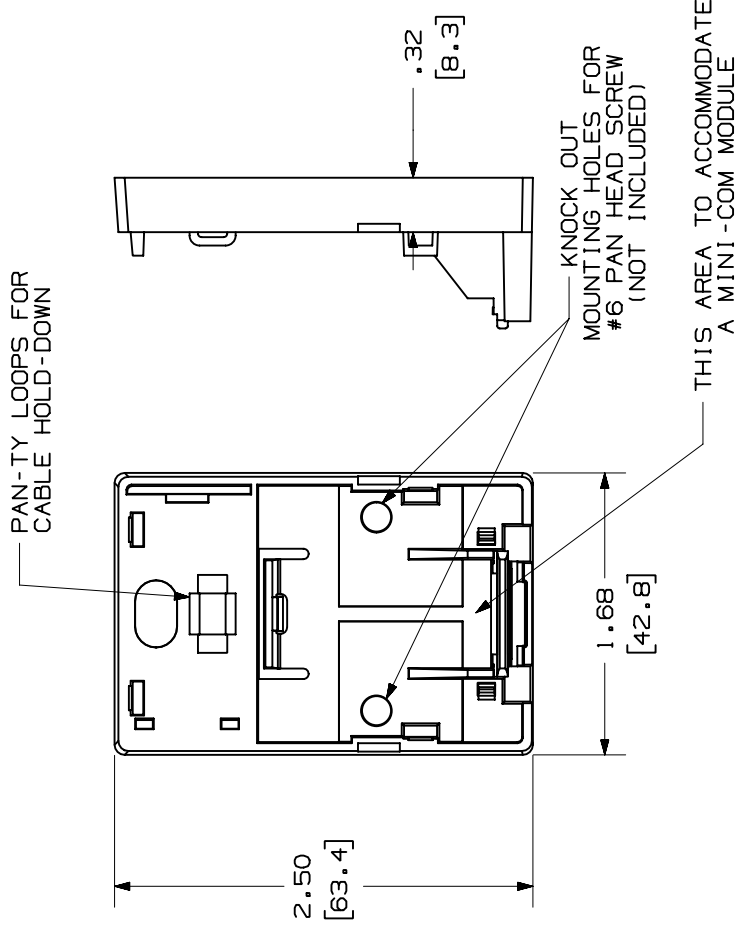
| | | | |
|-----|----------|------|---|
| ECN | 00800-21 | DWG | A |
| CHK | | SIZE | |

| REV | DATE | BY | CHK | DESCRIPTION | ECN | CHK | CUST | SUP |
|-----|---------|-----|-----|------------------|----------|-----|------|-----|
| R | 3-15-01 | JSP | | SEE SHEET 1 OF 2 | 00800-21 | | | |

THIS COPY IS PROVIDED ON A RESTRICTED BASIS AND IS NOT TO BE USED IN ANY WAY DETRIMENTAL TO THE INTERESTS OF PANDUIT CORP.

| | |
|-------------|-----------------------------------|
| PANDUIT P/N | WEIGHT |
| CBXS1**-A | .40 LB/10 PCS (181.9 g/10 PCS) |

- NOTES:
- SEE CURRENT CATALOG FOR ADDITIONAL PART NUMBER SUFFIXES TO INDICATE COLOR AND OR PACKAGE QUANTITY. SEE CATALOG FOR A COMPLETE LIST OF PARTS APPLICABLE FOR USE WITH THIS PART.
 - DIMENSIONS IN PARENTHESES ARE IN METRIC.
 - ALSO INCLUDED WITH BOX:
 - PLTIM-M PAN-TY
 - STRIP OF 1.00" X .75" FOAM TAPE FOR MOUNTING
 - BASE HAS 1 POCKET FOR OPTIONAL MAGNET (CSBM-X)
 - BREAKOUTS DESIGNED TO ACCEPT LD5/LDP5 RACEWAY. (DOES NOT ENTER BOX.)



CAD FILENAME/LAYERS

MO0800AD_DC_01A.PRT

| | | | |
|--|----------------------|---|---|
| <h1>PANDUIT</h1> <p>CORP. TINLEY PARK, ILLINOIS</p> | | <p>MINI-COM 1 POSITION SHUTTERED BOX (CBXS1**-A) CUSTOMER DRAWING</p> | |
| | | <p>UNLESS OTHERWISE SPECIFIED, DIMENSIONAL TOLERANCES ARE: (.X) ± .010(.3) (.XXX) ±.010(.3) (.XX) ±.03(.8) ANGLES ±</p> | |
| <p>UNLESS OTHERWISE SPECIFIED, ALL DIMENSIONS ARE GIVEN IN INCHES, THIRD ANGLE PROJECTION.</p> | | <p>SCALE: NONE</p> | <p>DWG NO: 00800-21 SHEET 1 OF 2</p> |
| <p>DRAWN BY: JSP</p> | <p>DATE: 3-15-01</p> | <p>MAT'L:</p> | <p>BOX: ABS DOORS: HIPS</p> |
| <p>REV: R</p> | <p>DATE: 3-15-01</p> | <p>ECN: 00800-21</p> | <p>DESCRIPTION: RELEASED TO PRODUCTION.</p> |
| <p>BY: CHK</p> | <p>CHK: CHK</p> | <p>CUST: CUST</p> | <p>SUP: SUP</p> |